

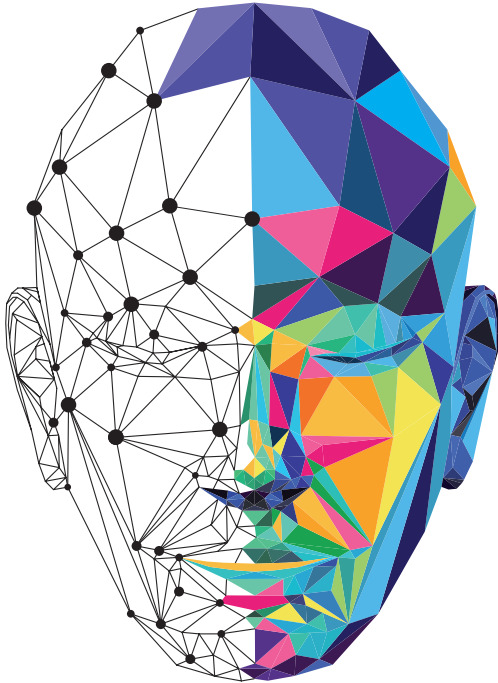
**dkfz.**

GERMAN  
CANCER RESEARCH CENTER  
IN THE HELMHOLTZ ASSOCIATION

Postdoc Program

# CONNECTING THE DOTS.

**RESEARCH FOR A LIFE WITHOUT CANCER**  
International Postdoc Program



# CONNECTING THE DOTS.

**RESEARCH FOR A LIFE WITHOUT CANCER**

International Postdoc Program



## LOOKING FOR AN EXCELLENT RESEARCH ENVIRONMENT TO MAKE YOUR NEXT STEP?

Germany's largest biomedical research institute offers exciting opportunities for Postdocs in basic, epidemiological, computational and translational cancer research.

- Join our international community of 400 postdoctoral researchers
- Working language: English
- Full access to the DKFZ International Postdoc Program
- Manage your own professional development with training courses and career support
- Make use of state-of-the-art research facilities and infrastructure
- Collaborate in an interdisciplinary working environment that builds on scientific exchange and excellence
- Share ideas and meet colleagues in the active DKFZ Postdoc Network

The DKFZ International Postdoc Program supports different application routes to join the Center and make your Postdoc a success!

- Prestigious DKFZ Postdoc Fellowships are awarded through a competitive recruitment process to young scientists who wish to work at the forefront of basic and translational cancer research
- Find out about open positions in DKFZ laboratories ([www.dkfz.de/jobs](http://www.dkfz.de/jobs))
- Apply directly to DKFZ research group leaders at any time

Postdoc positions in cancer research.

Find more info at

[www.dkfz.de/postdoc](http://www.dkfz.de/postdoc)

**dkfz.**

GERMAN  
CANCER RESEARCH CENTER  
IN THE HELMHOLTZ ASSOCIATION